

Interface: WIFI,
USB cable, U-disk



Control panel



Power switch



Blade tool

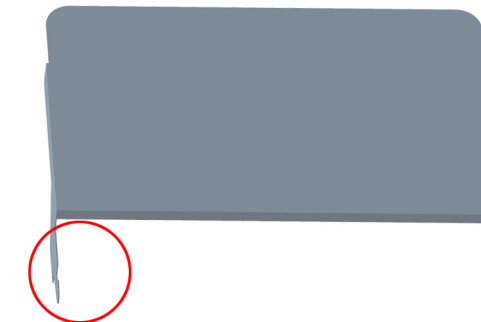


SKYCUT A3 MAX Auto feeding label cutter Quick Start Guide

ASSEMBLE



1. Paper tray assembling

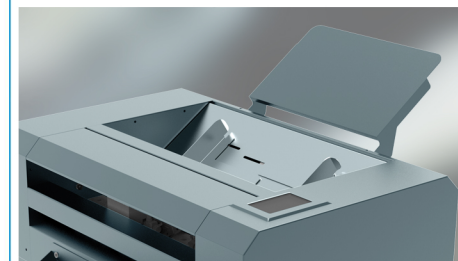


2. Paper bar assembling



3. WiFi assembling

LOAD MATERIAL



The paper slot



Automatic paper feeding



Automatic positioning patrol

3) Loosen bronze ring (counterclockwise)

5) Tighten bronze ring to lock position

1) Push in plunger to insert or remove blade

4) Adjust blade depth with silver ring

2) Carefully insert blade into blade holder and then release plunger

Blade Setup

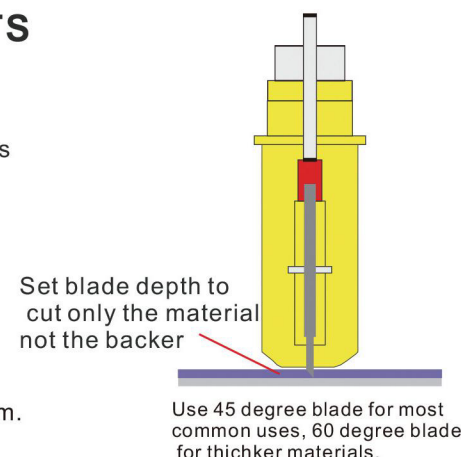
KEY STEPS FOR GETTING OPTIMAL RESULTS

Use a short blade depth around 0.2mm. In most cases, the blade does not need to be extended more than 1/2 the thickness of a credit card. New users tend to expose too much blade. The idea is to cut through just the top layer of the sticker and to leave the backing layer with only minimal scratches. This allows you to weed the top layer off the backing easily. If corners or small detail do not cut all the way through, consider increasing the force before extending the blade depth.

A good starting value for speed is 600mm/s.

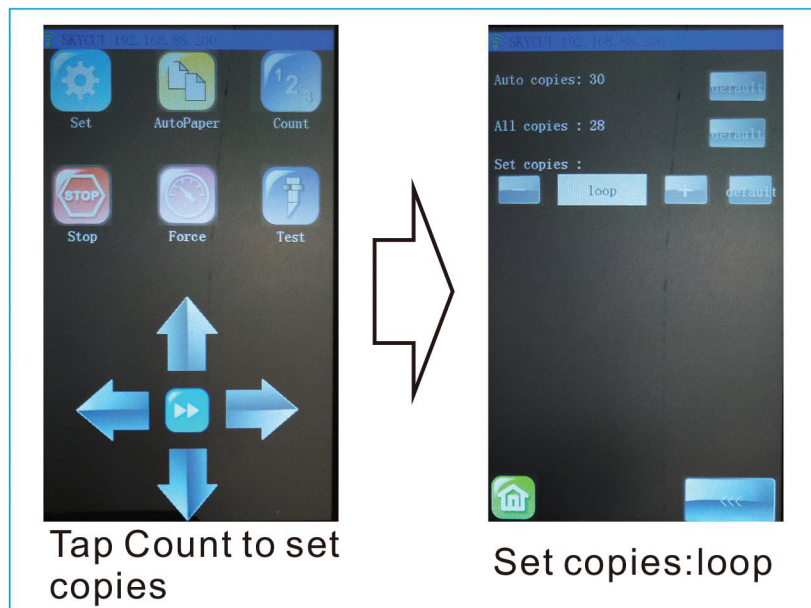
Set the correct force. A good starting value for force is 20 to 30.

Tap Autofeed button to load material, recommended cutting model is custom. We should adjust the blade to the first mark for first cutting job.



More Videos on YouTube search: **SKYCUT cutting plotter**

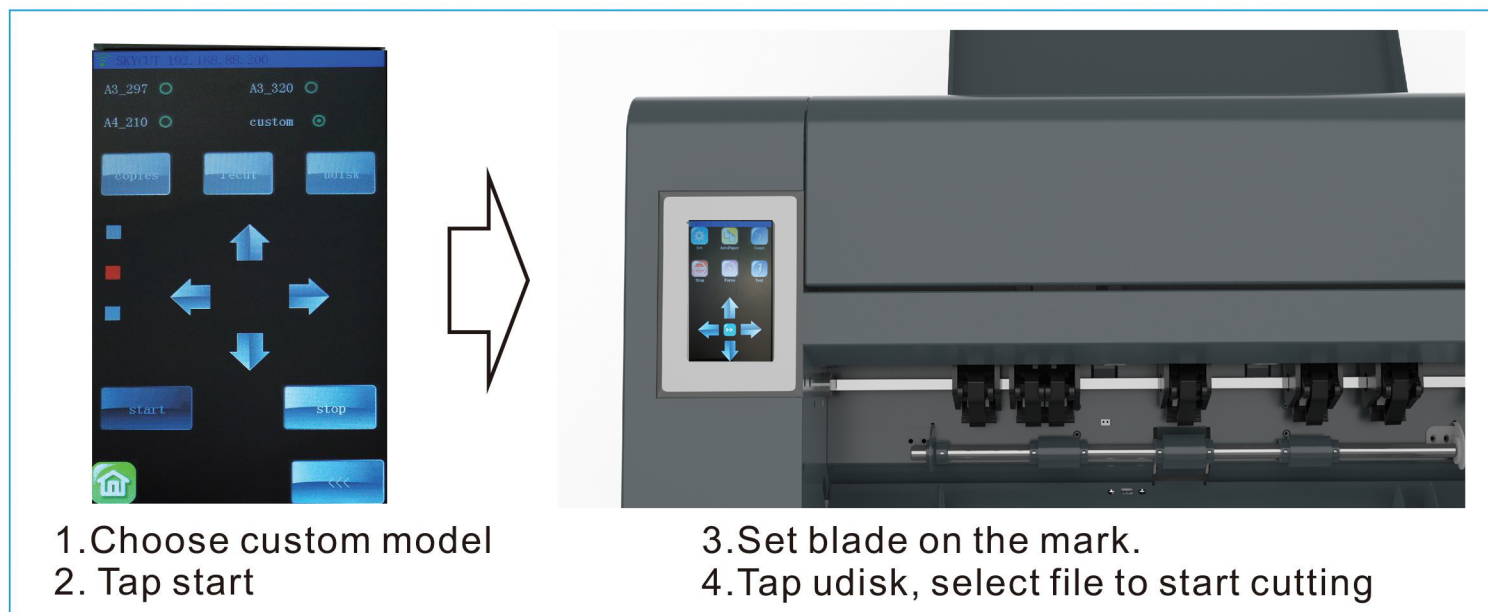
COUNT



WIFI



SEND TO CUT



You will need the software serial number you received with your purchase to download software AFTER SETTING UP INTERFACE ON THE CUTTER, DOWNLOAD AND INSTALL EITHER SIGNMASTER SOFTWARE OR CORELDRAW AND CONFIGURE YOUR SOFTWARE WIFI TO MATCH CUTTER

Download SignMaster at: http://fcws6.com/downloads/signmaster/_SignMaster_UniverDSR.exe

